



REID LINE EAST, RD 5 FEILDING 4775, New Zealand

Phone (06)323 2509 Fax (06)323 2709

Email info@harvesterconcepts.co.nz

Basal Sprayer

User Manual



Conditions of Sale and Guarantee

Your *HARVESTER CONCEPTS LTD* product is guaranteed to be free from defects in materials and/or workmanship under normal use and service for a period of 12 months from date of initial purchase.

HARVESTER CONCEPTS LTD'S liability and obligation is limited to problems which *HARVESTER CONCEPTS LTD* acknowledges to be defective under the guarantee conditions either to

- the free replacement or repair (where practicable) at the *HARVESTER CONCEPTS LTD* premises of any parts returned within the guarantee period

- or shipment of replacement parts to the customer, as mutually agreed to.

Supply of non standard parts or services from other than *HARVESTER CONCEPTS LTD* are not covered under the guarantee conditions unless prearranged, in writing, with *HARVESTER CONCEPTS LTD*

Shipment of product to *HARVESTER CONCEPTS LTD* is the consumers responsibility and cost. Guarantee conditions are void for any of the following reasons:-

- Abnormal use of the product
- Accident damage or vandalism
- Modifications or unauthorised repairs to the product or its components
- Where component "seconds" have been supplied
- Normal wear and tear

HARVESTER CONCEPTS LTD cannot be held liable for any damage caused to people or other property during use of the product or as a result of any defect or malfunction of product or components supplied by *HARVESTER CONCEPTS LTD*. Use of the product is solely the users responsibility. Other losses such as delays in work, incorrect or misleading information, omissions and errors, *HARVESTER CONCEPTS LTD* is not liable for.

This guarantee is expressed in lieu of all other guarantees expressed or implied and all other obligations and liabilities on *HARVESTER CONCEPTS LTD's* part and specifically excluding consequential damage. *HARVESTER CONCEPTS LTD* makes no guarantee of merchantability or fitness for purpose and is not responsible to any purchaser of its products for any undertaking, representation or guarantee, except those stated in these terms, made by any person, dealer or body corporate selling or dealing with its products in any manner whatsoever.

Strap Adjustments

Adjust the shoulder straps first so the back pack sits comfortably on your back but not too low. High on the shoulders is best.

Once the shoulder straps are adjusted correctly, with the back pack fitted onto the operator, connect the cross-chest strap and adjust so there is no slack in it.

The Spray Head

Three filter/check valves are fitted to the spray head. The filters remove any particles that could clog the spray nozzle. The check valve feature provides a quick cutoff of the liquid flow and prevents liquid in the boom from leaking out when the applicator is not operated.

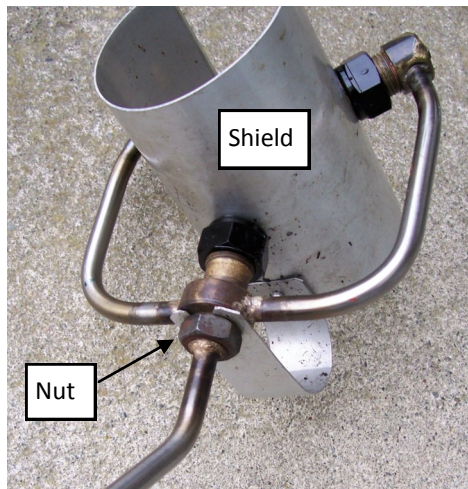
Maintenance:-

If the flow of liquid from the nozzle seems weak the filter may need cleaning.

If fluid leaks from a nozzle when the applicator is not operated the filter check valve may need cleaning or replacing.

To access the nozzle or filter/check valve the shield must be removed; loosen nut, gently compress the shield "inwards" and off each front spray nozzle. Then remove off rear nozzle and slide out the bottom side of spray head.

The caps can now be removed giving access to the internals. Assembly is a reverse of dismantling.



Index

Page

2. Conditions of Sale and Guarantee
3. Index & Introduction & Safety Notes
4. Your Basal Sprayer consists of
5. 20ml Forestry Applicator
8. Applicator Parts
10. The Spray Head

Introduction

Thank you for purchasing a Basal Sprayer (BS). The Basal Sprayer will allow you to quickly and easily spray hard to reach and control weed species.

The BS has a long boom making it easier to reach into inaccessible areas. The spray head has been made as compact as possible and the skid will make it easier for inserting and removing from target plants. The shield will contain the spray and minimise any overspray or drift.

Safety Notes

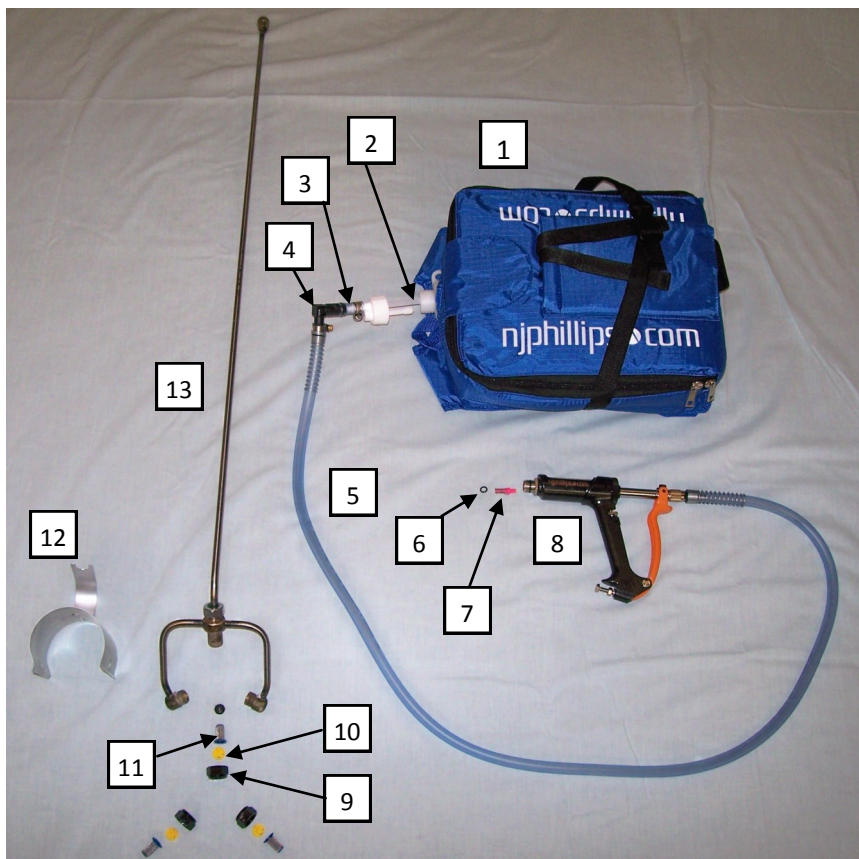
Chemicals used in the BS may be dangerous to your health. We have taken every precaution to isolate the chemicals from the operator. If a fault occurs or the operator comes into contact with the spray chemical, take immediate action to wash off the spray as per the manufacturers instructions.

If any faults or leaks occur with the Basal Sprayer stop using the BS and fix problem immediately.

Clean up any chemical spills or leaks in accordance with the spray manufacturers instructions.

NOTE:- when supplied new, the BS has been tested on water only.

Your Basal Sprayer Consists Of:-



- | | |
|----------------------|------------------|
| 25. Adjuster Spindle | 27. Adjustor Nut |
| 26. Trunnion | 28. Handle |

PLEASE ORDER BY KIT AND PART NAME SPARE PARTS AVAILABLE:

KIT No. PART NAME INCLUDES ILLUSTRATION No.

WX1444 Major Service Kit 3,4,6,8,9,10,11,12,13,14,16,19,24.

WX1364 Minor Service Kit 3,4,6,8,10,12,15,16,19,24.

WX1371 Spear Not illustrated.

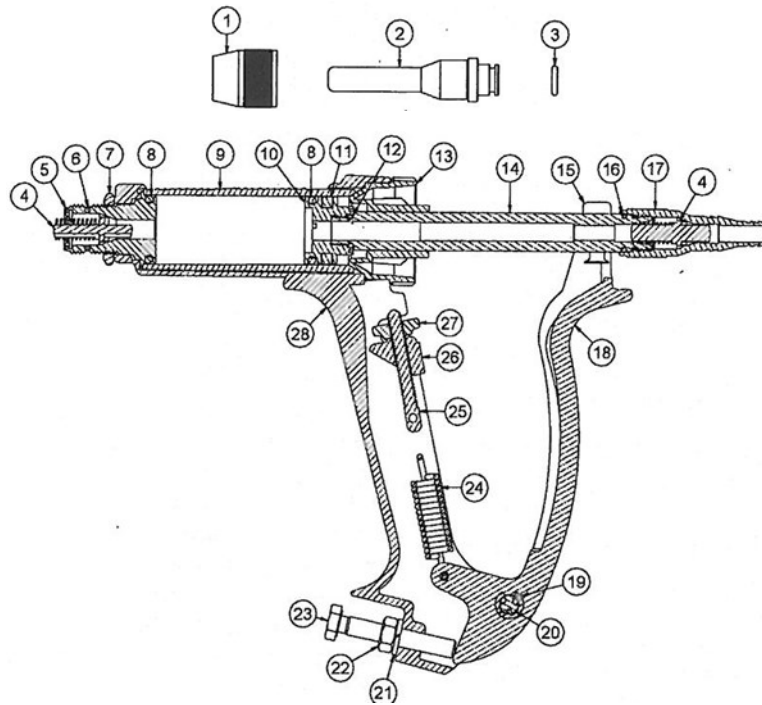
For spare parts or service of applicator contact:-

Drench Gun Services
 180 Kelvin Grove Road
 Palmerston North 4414.
 Ph 06 356 4744
 Fax 06 356 4778
 Email drenchgun@xtra.co.nz

Key:-

Item	Description	Part Number	Quantity
1	Backpack, Powermaster	SP1009 (modified straps)	
2	Spray Pack, Phillips	WX185	
3	Hose Clip	#11-22	
4	90° fitting		
5	Hose c/w strain relief wires		
6	"O" Ring	#009	
7	Non Return Valve		

Applicator Parts



- | | |
|------------------------|--------------------|
| 1. Nozzle Nut | 13. Push Rod Guide |
| 2. Spray Stream Nozzle | 14. 20ml Push Rod |
| 3. Nozzle Seal Ring | 15. Lever Pads |
| 4. Valve & Spring | 16. Seal Ring |
| 5. Delivery Cage | 17. inlet Adaptor |
| 6. Seal Ring | 18. Lever |
| 7. Lock Nut | 19. Circlip |
| 8. Seal Ring | 20. Lever Pin |
| 9. Cylinder | 21. Spring Washer |
| 10. Piston | 22. Hex Nut |
| 11. Lubricating Washer | 23. Hex-Head Bolt |
| 12. Seal Ring | 24. Return Spring |

Item	Description	Part Number	Quantity
8	Applicator, 20ml Forestry	Phillips PAM797	
9	Cap, Teejet	CP8027-NYB	3
10	Nozzle, Teejet	80-02-VP	3
11	Filter/check valve, Teejet	4139A	3
12	Shield/Skid		
13	Boom/Spray Head		

20ML VARIABLE FORESTRY APPLICATOR

The NJ Phillips 20ml Forestry/ Marine Applicator has been designed for the administration of most forestry solutions.

As components in this applicator may be affected by solvents, in certain formulations no responsibility will be accepted by the manufacturer should the applicator be unable to operate with such product.

BEFORE USE

Always read the label.

Check the label on the manufacturer's container for dose rates, precautions, and safety information prior to use.

Use only the recommended dose rate. Use only the manufacturer's recommended rates. Refer to the manufacturer's dose rate chart or specification. NJ Phillips Pty Limited will take no responsibility if the applicator is used for any other purpose than specified or used contrary to the manufacturer's dose rate specifications. Check the applicator. Before each use, the nozzle should be inspected to ensure plating is not damaged or worn to a sharp edge. Should this occur, smooth with a file or emery paper or

replace the nozzle.

Instructions For Use

Priming the Applicator:-Set the applicator to maximum dose and actuate the applicator by depressing lever quickly until material is drawn into the cylinder. Expel all air by holding the applicator in a **vertical position**, with the spray head pointing upwards until both cylinder and boom are full. **CAUTION: Care must be taken to ensure the liquid does not come into contact with any part of the operators body. Chemicals may cause injury to the operator.**

To adjust the dose:-

Loosen dose adjuster hex nut (item 22) Depress lever to take pressure off the dose hex-head bolt (item23), adjust hex-head bolt in or out depending on dose setting required. To set correct dose, align front black piston with appropriate cylinder marking. Once the piston is in the correct position, release pressure on lever and re-tighten the hex nut.

The cylinder markings are indicative only. To confirm does rate a calibration check should be done—into a calibrated container

Care and Maintenance

To ensure continued high performance from this applicator, attention to cleanliness is essential. After each use, flush the applicator / spray head and feed tube thoroughly by pumping through a warm water detergent mix, followed by clean water. Remove the feed hose from the applicator and suck a small quantity of NJ Phillips Lubricant into the cylinder by immersing the inlet fitting in the lubricant and gently pumping the lever. If at any time the applicator should become sluggish in operation, maintenance by cleaning and lubrication should overcome the problem. **NOTE:-** Do not flush with boiling water or leave exposed to sunlight unnecessarily. Prolonged temperatures in excess of 54°C will damage certain components.

NOTE:- DO NOT store your applicator, spray head or feed tube full of product. Clean as per “Care and Maintenance” instructions.

